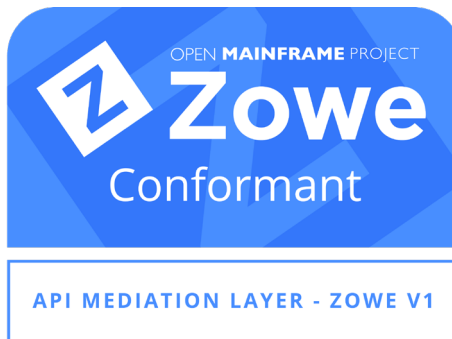


(E)JES[®]

Universal JES Management

```
#include <string.h>
int
lcs_naive(const string a, const string b)
{
    lcs_solution lcs;
    const size_t a_sz = a.size();
    for (size_t i = 0; i < a_sz; ++i)
    {
        for (size_t j = 0; j < b_sz; ++j)
        {
            const size_t max_match = min(a_sz - i, b_sz - j);
            if (max_match <= result.len)
                break;
            size_t match = 0;
            while (match < max_match && a[i + match] == b[j + match])
                ++match;
            if (result.len < match)
                result = lcs_solution { i, j, match };
        }
        if (a_sz - i <= result.len)
            break;
    }
    return result;
}
```



What is (E)JES?

(E)JES is a system management tool that gives you information to monitor, manage, and control your JES2 and/or JES3 z/OS® JESplex.

With (E)JES, you can:

- Control job processing (hold, release, cancel, and purge jobs).
- Monitor jobs while they are running.
- Browse jobs without printing.
- Control JESplex parameters, initiators, job classes, and job class groups.
- Control printers, punches, functional subsystems, and NJE devices.
- Control your JES SPOOL configuration.
- Monitor and control JES resources.
- Control WLM scheduling environments and resources.
- Control WLM enclaves, MVS subsystems and MVS dynamic exits.
- Control z/OS UNIX processes and mounted file systems.
- Control the z/OS Health Checker.
- Search and process APF, LNKLST, LPALST, Parmlib and Proclib data sets.
- Display and manage paging resources.
- Issue system commands.
- Automate routine tasks.

(E)JES Entry Panel

```
Jobs Resources Devices Tools Filter View Options Help
2019/09/06 (2019.024) (E)JES Entry Panel MVS60 V5R9.0 14:52
Command ==>
Default Command ==>
Job Names/Nums ==> ==> ==> ==> More: +
User IDs ==> ==> ==> ==>
Owner IDs ==> ==> ==> ==>
Origins ==> ==> ==> ==>
Job Classes ==> ==> ==> ==>
Destinations ==> ==> ==> ==>
Sysout Classes ==>
Level of Detail ==> MIN (MIN or MAX)
Default Sort ==> NUM (STD,NAME,NUM,PTY,TIME)
Default SortDir ==> A (Ascending or Descending)
Dynamic Update ==> YES (YES or NO)
Display Jobs ==> YES (YES or NO)
Display STCs ==> YES (YES or NO)
Display TSUs ==> YES (YES or NO)
Display ATXs ==> YES (YES or NO)
F1=Help F2=Split F3=Exit F4=Return F5=Rep Find F6=Book
F7=Backward F8=Forward F9=Swap F10=Actions F12=Cancel
```

(E)JES consists of panels that provide immediate and current information about jobs, printers, queues, and resources in a z/OS JESplex. With (E)JES, you can easily access and modify all attributes for jobs, started tasks, TSO users, APPC/MVS transaction jobs, z/OS UNIX processes running anywhere in your JESplex. Simple commands and rapid accessibility not only save you time, but also make interaction with your JES subsystems easy.

Status Display

Jobs	Resources	Devices	Tools	Filter	View	Options	Help			
STATUS	4,981S	145X	4,692W	146H	OT	117,125,669	Records	Row 201 of 4983		
Command	===>							Scroll ===> CSR		
Cmd	RowNum	JobName	JobID	Status	Process	StepNum	StepName	JP	MaxComp	Rec
	201	TIVSMPRT	J0280946	W-OUTPUT	OUTSERV	13		2	CC 0000	
	202	TIVSMPRT	J0281008	W-OUTPUT	OUTSERV	13		2	CC 0000	
	203	TIVSMPRT	J0283399	W-OUTPUT	OUTSERV	13		2	CC 0000	
	204	CSSMTP	S0286325	W-OUTPUT	OUTSERV	1		15	AB S222	
	205	TIVSMPRT	J0287144	W-OUTPUT						
	206	TIVSMPRT	J0289818	W-OUTPUT						
	207	TIVSMPRT	J0292168	W-OUTPUT						
	208	TIVSMPRT	J0294829	W-OUTPUT						
	209	TIVSMPRT	J0297404	W-OUTPUT	OUTSERV	13		2	CC 0000	
	210	TIVSMPRT	J0299996	W-OUTPUT	OUTSERV	13		2	CC 0000	
	211	TIVSMPRT	J0302024	W-OUTPUT	OUTSERV	13		2	CC 0000	
	212	TIVSMPRT	J0304222	W-OUTPUT	OUTSERV	13		2	CC 0000	
	213	TIVSMPRT	J0304238	W-OUTPUT	OUTSERV	13		2	CC 0000	
	214	TIVSMPRT	J0306441	W-OUTPUT	OUTSERV	13		2	CC 0000	
	215	TIVSMPRT	J0306568	W-OUTPUT	OUTSERV	13		2	CC 0000	
	216	TIVSMPRT	J0307170	W-OUTPUT	OUTSERV	14		2	CC 0768	
ABEND S222 The job was canceled by the operator without requesting a dump.										
		F1=Help	F2=Split	F3=Exit	F4=Return	F5=RFind	F6=Book	F7=Up		
		F8=Down	F9=Swap	F10=Left	F11=Right	F12=Cancel				

```

lcs_solub
lcs_sol
const s
for (s)
for e
con
if
b
siz
while
++watch
if (result.len < watch)
result = lcs_solution (s)
}
if (saz - i <= result.len)
break
}
return result
    
```



Benefits of Using (E)JES

Improved Job Management

(E)JES lets you easily manage jobs in your spool. It gives immediate, up-to-date information, such as:

- The status, class, priority, date, and time of a job
- All jobs on a queue, such as input, hold, or output
- Job details no matter where it is in the JESplex
- Reasons a job is delayed
- Output from a job as it is created no matter where the job is running in the JESplex

Improved Output Management

(E)JES displays detailed information about output that is ready to be printed, including:

- The total number of lines to be printed
- Classes the output is assigned to
- Forms needed for printing
- Date the output was created

Improved Resource Management

(E)JES provides an effective way to manage resources.

- Control and manage JESplex parameters, JES-managed initiators (JES2), job classes, and job class groups (JES3)
- Control NJE nodes
- Control and manage WLM resources
- Control WLM enclaves and z/OS UNIX processes
- Control the z/OS Health Checker
- Control and manage system requests
- Reduce problem management time
- Issue system commands

Benefits of Using (E)JES

Improved User Access Control

You can tailor (E)JES to meet the needs of your users and your security requirements. You can control:

- Who can use (E)JES
- Which users can issue (E)JES control commands
- Which users can issue system commands
- For which jobs users can issue commands
- Which columns to display on panels
- Which jobs and output to display on panels

You can implement these controls internally or through the SAF and an external program such as RACF®.

Improved Device Control

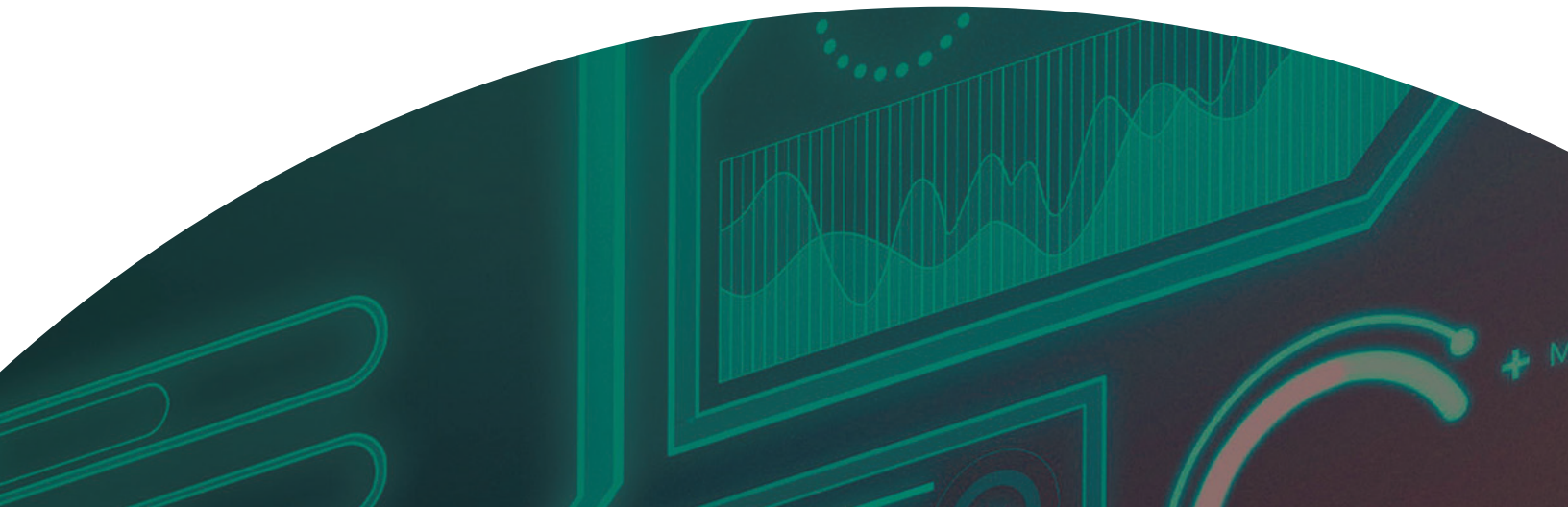
With (E)JES, you have a single interface to some of the most important devices on your system:

- Local and remote printers and punches
- Spool partitions and volumes
- JES3 functional subsystems

Improved Automation of Routine Tasks

The (E)JES Application Programming Interface (API) and companion REXX and Java APIs make powerful (E)JES functionality available to programs, allowing users to:

- Create programs to perform routine tasks
- Use installation-written applications to obtain system information.
- Use System REXX to access “smart” tools and commands without TSO/E access.



(E)JES Web

(E)JES Web is a browser-based interface to (E)JES implemented in Java. (E)JES Web has much of the same functionality as (E)JES. Through menu bars, context menus, and dialog boxes, you can monitor, manage, and control your z/OS JESplex.

Right-click a row to access commands.

The screenshot shows the (E)JES Web interface with a table of jobs. A context menu is open over a row, listing various actions such as 'Activity', 'Alter', 'Browse', 'Cancel', 'Data Set Status', 'Display', 'DJC', 'Download As', 'Extract', 'Hold', 'Mail As', 'Out Desc', 'Release', 'Requeue To', 'Restart', and 'Run'. A red arrow points to the 'Browse' option in the menu.

Overtyping a value to change it.

Drag and drop to arrange columns.

Primary Selections

Display Jobs Display STCs Display TSUs Display JCL

Job Names:

User IDs:

Owner IDs:

Origins:

Job Classes:

Destinations:

Sysout Classes:

Drag and drop to arrange columns.

Column Arrangement

Drag and drop the column titles to hide, show, or order columns.

Hidden Columns	Visible Columns	Width
JTYPE	JobName	8
JNUM	JobID	
JID		

MaxComp

QTime

QDate

Process

Status

CurStep

NumStep

StepName

JP

Records

Lines

Right-click to download or extract data.

The screenshot shows the (E)JES Web interface displaying a job log for LISTCAT J0205754. A context menu is open over a row in the log, listing actions such as 'Download As PDF', 'Download As Text', 'Extract DASD', 'Extract DASD Pattern', 'Extract Print1', 'Extract Print1 Pattern', 'Extract Print2', 'Extract Print2 Pattern', 'Extract UNIX', 'Extract UNIX Pattern', 'Mail As PDF Attachment', and 'Mail As Text Attachment'. A red arrow points to the 'Download As PDF' option.

Access dialog boxes via drop-down menus.

EJESRCH	J0185074	0	32,672	N	3	LINE	1PRT
EJESRCH	J0185074	0	32,672	N	3	LINE	1PRT
EJESML	J0185075	0	2,332K	N	3	LINE	1PRT
EJESML	J0185075	0	32,672	N	3	LINE	1PRT

Command: Enter a system command and press ENTER. Press ESC to dismiss.

Type a slash to enter a system command.

About Us

Phoenix has been providing enterprise software solutions around the globe since 1979. Phoenix prides itself in being nimble, able to quickly capitalize on new hardware and software technology with a focus on software modernization, and providing the best possible user experience.

Visit us at www.phoenixsoftware.com to learn more about our products and [download a free trial of \(E\)JES](#).

PHOENIX SOFTWARE INTERNATIONAL
www.phoenixsoftware.com
sales@phoenixsoftware.com
(310) 338-0400
FAX (310) 338-0801

The "P" logo, Phoenix Software International, and (E)JES are registered trademarks of Phoenix Software International.

IBM, RACF, and z/OS are registered trademarks of the International Business Machines Corporation.

All other trademarks are acknowledged and respected.

© Copyright 2004-2021 Phoenix Software International, Inc.